



GREEN POINT CHRISTIAN COLLEGE

INDUSTRIAL TECHNOLOGY - TIMBER

PRACTICAL BASED



PROBLEM SOLVING

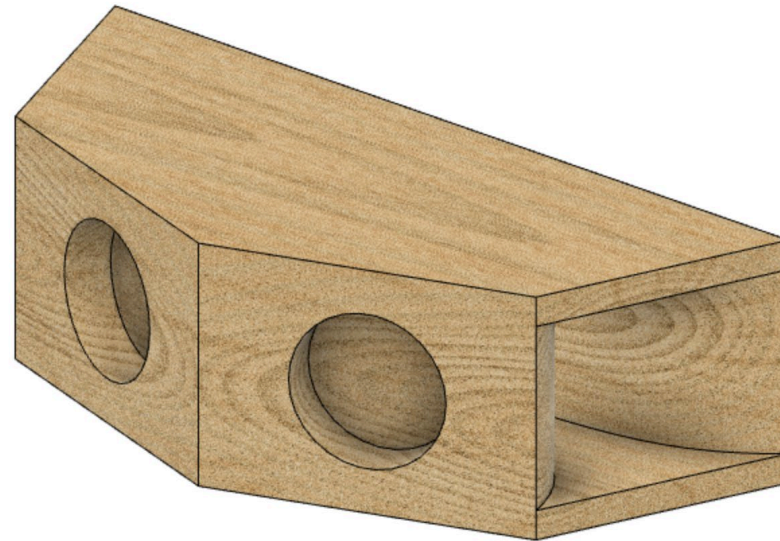
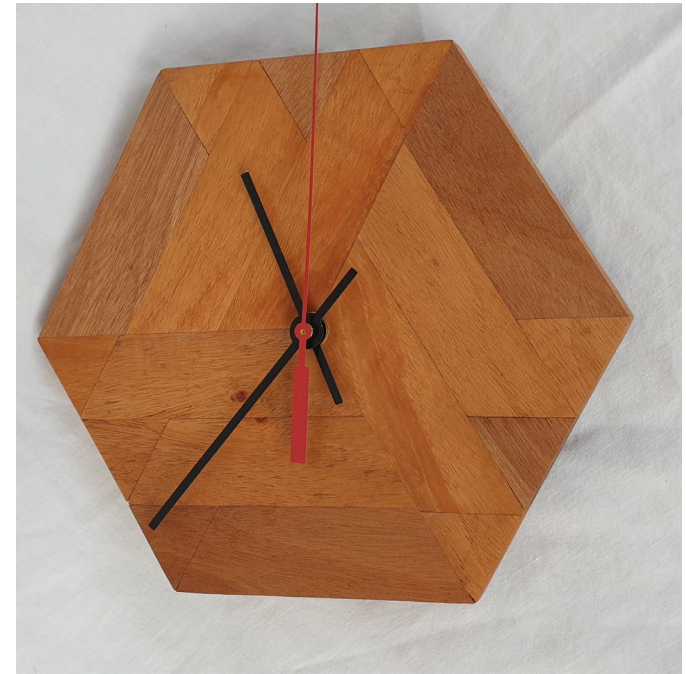


CROSS-CURRICULAR
LINKS



PRACTICAL

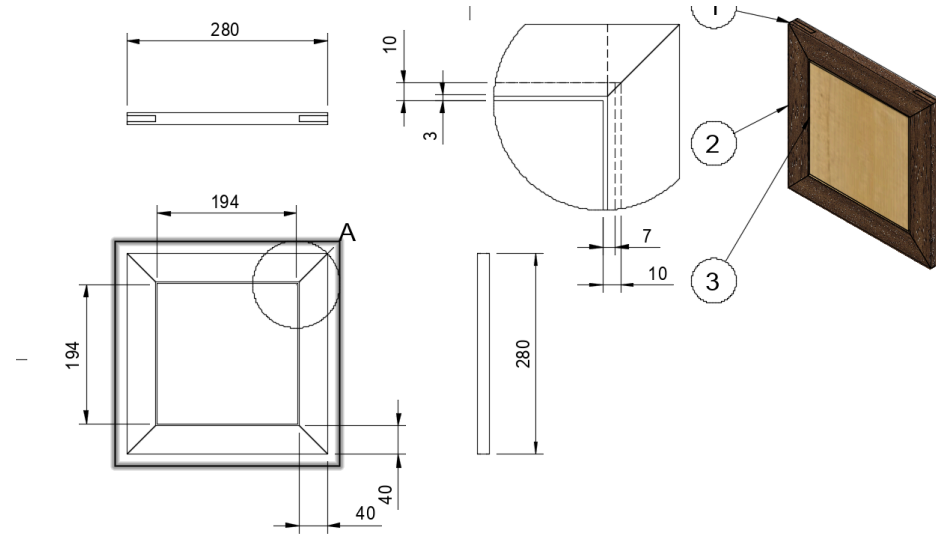
- Tools and Techniques
- Develops management skills
- CAD (Computer Aided Drawing)
- Self evaluation



PROJECTS

May include:

- Clocks
- Bluetooth Speakers
- Cabinets
- Tables
- Stools





Equipped for Life



www.gpcc.nsw.edu.au

