



GREEN POINT
CHRISTIAN COLLEGE

Story Board



**Pinstriped Blazer,
Ladies
10-12**

Blazers
Alinta WOOL Blends are known for their strength and resilience, making them a durable choice that can withstand regular / daily wear. Wool is a natural insulator which helps regulate body temperature making them a suitable choice for various seasons.

**Pinstriped Blazer,
Unisex
10-12**

Blazers
Alinta WOOL Blends are known for their strength and resilience, making them a durable choice that can withstand regular / daily wear. Wool is a natural insulator which helps regulate body temperature making them a suitable choice for various seasons.

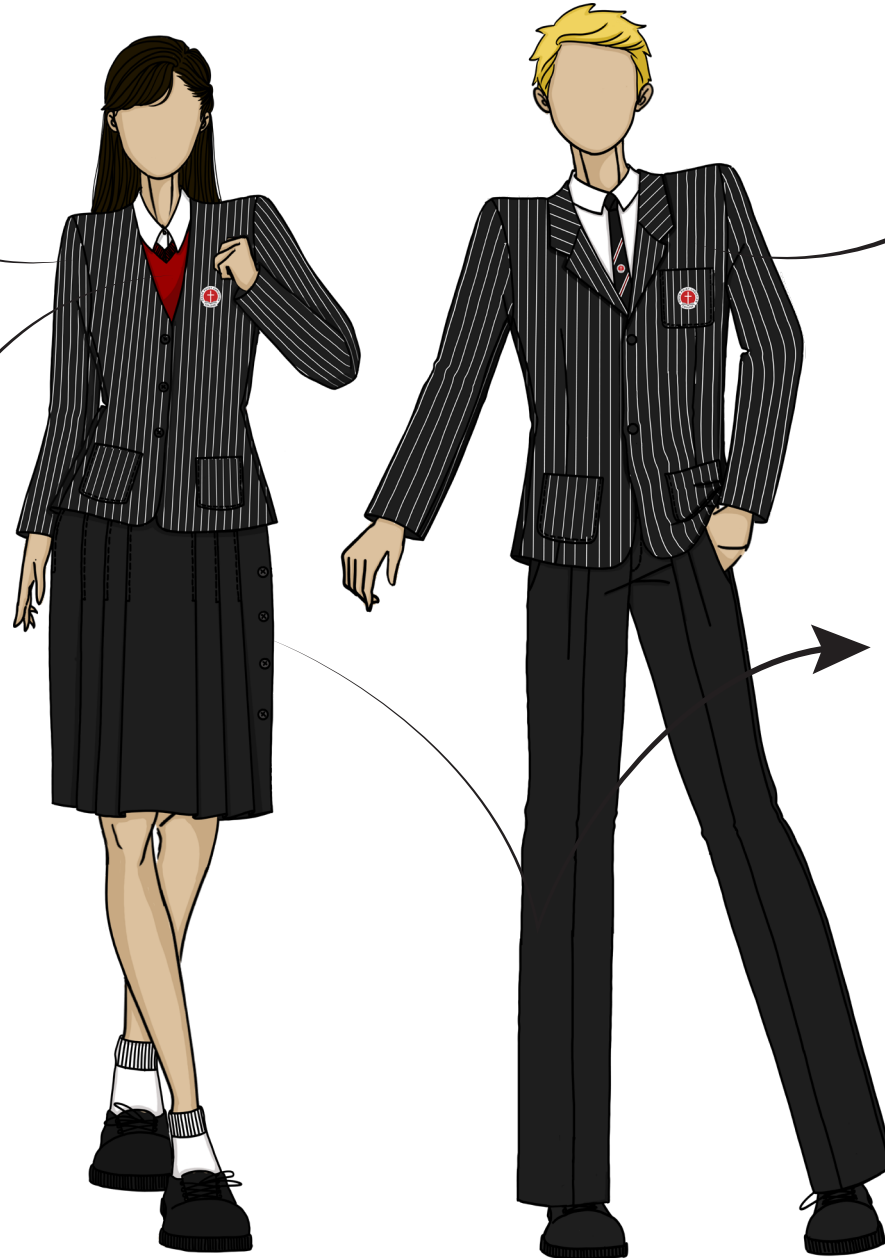
**Red cotton blend Knit
Jumper Unisex
K-12**

Knitwear
At Alinta we can offer a large range of knitwear options to meet each schools individual needs. We offer yarn blends such as Wool, Nylon, Acrylic, Polyester, Cotton. This range of fibre options ensures we can offer products with a variety of price points. Yarn blends for those living in more temperate climates and hypo-allergenic options for those who have wool allergies or Sensitive skin.

*Hypo-allergenic Option

**Black skirt, Formal
shorts and trousers
7-12**

**Alinta PVS Poly / Viscose with
STRETCH**
The addition of Spandex to Alinta PVS suiting's enhances comfort and flexibility, allowing for better movement and fit which is beneficial in tailored garments that are worn for long periods such as school trousers, shorts and skirts.



New blouse fabric

Red trim

7-9

Blouses/Shirtings

Alinta EASYCARE shirting's are designed using a combination of Polyester and Cotton. Cotton allows for comfort and breathability while Polyester is durable and helps the garment resist wrinkles so it looks neat and requires less ironing.



New blouse fabric

Black trim

10-12



Fabric Swatch

White S/S shirt

- New fabric

7-12

Blouses/Shirtings

Alinta EASYCARE shirting's are designed using a combination of Polyester and Cotton. Cotton allows for comfort and breathability while Polyester is durable and helps the garment resist wrinkles so it looks neat and requires less ironing.

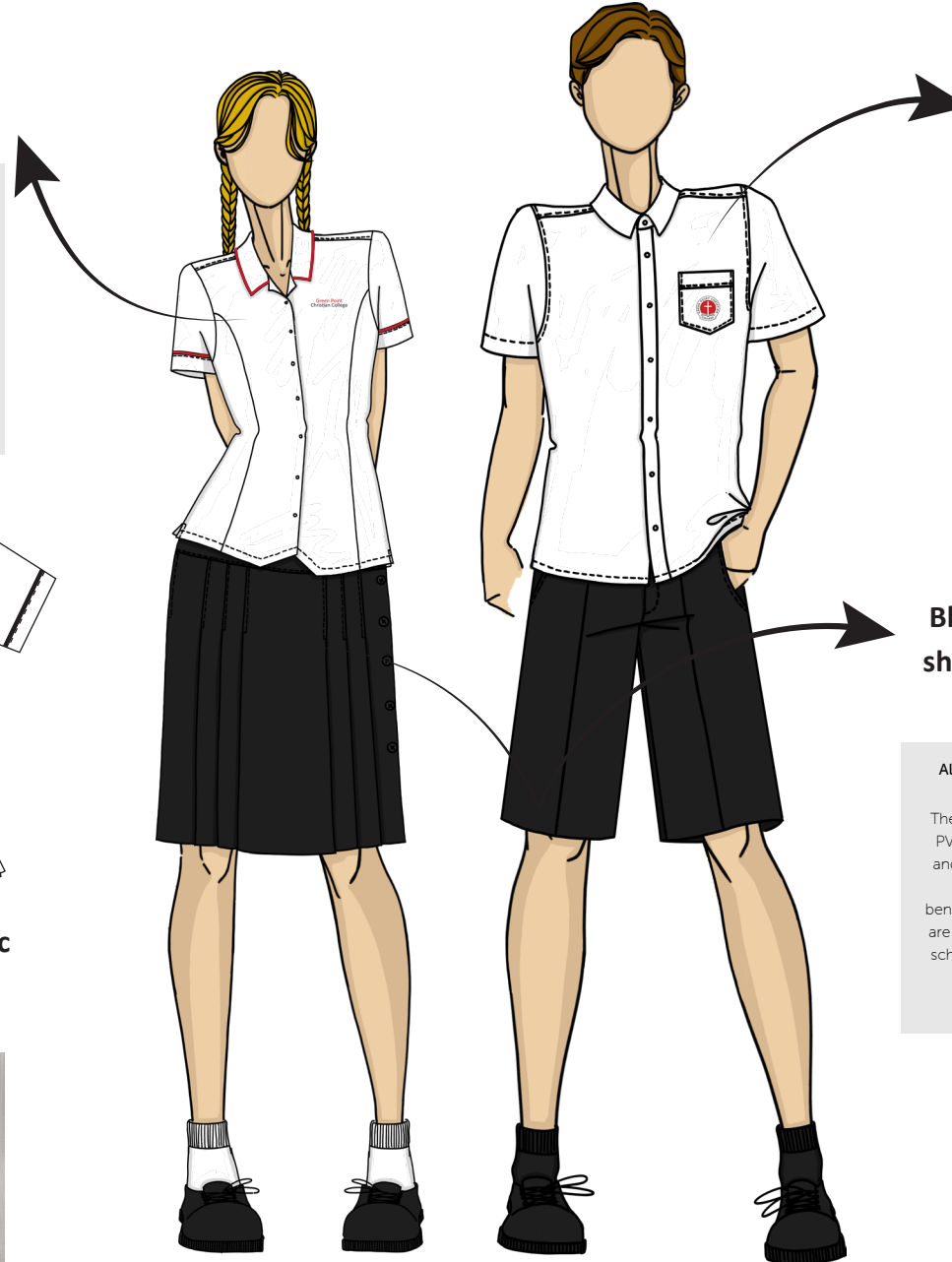


Black skirt, Formal shorts and trousers

7-12

Alinta PVS Poly / Viscose with STRETCH

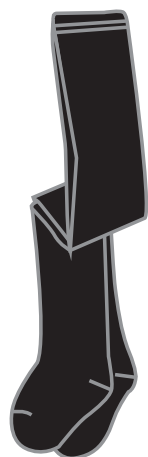
The addition of Spandex to Alinta PVS suiting's enhances comfort and flexibility, allowing for better movement and fit which is beneficial in tailored garments that are worn for long periods such as school trousers, shorts and skirts.



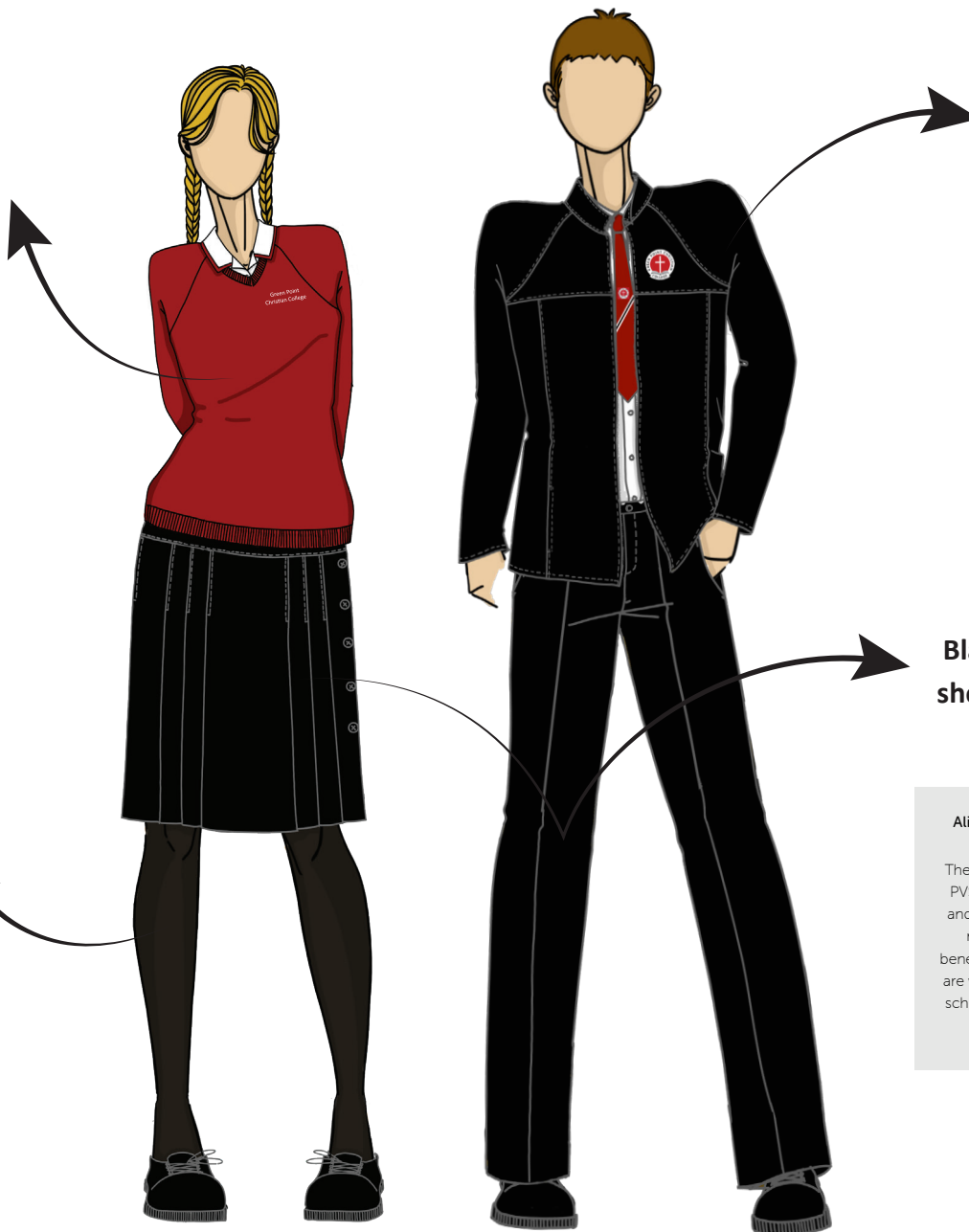
**Red cotton blend Knit
Jumper Unisex
K-12**

Knitwear
At Alinta we can offer a large range of knitwear options to meet each schools individual needs. We offer yarn blends such as Wool, Nylon, Acrylic, Polyester, Cotton. This range of fibre options ensures we can offer products with a variety of price points. Yarn blends for those living in more temperate climates and hypo-allergenic options for those who have wool allergies or Sensitive skin.

*Hypo-allergenic Option



Microfibre Tights



**Softshell Jacket
7-9**

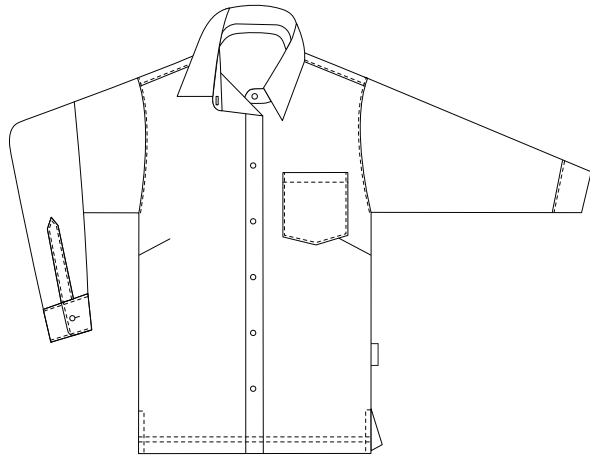
SOFTshell
Alinta SOFTShell is a high-performance outer wear fabric that is wind and water resistant – protecting the wearer from harsh elements while adding that extra layer of warmth. Alinta SOFTShell is engineered with spandex providing stretch and comfort for all day wear.

**Black skirt, Formal
shorts and trousers
7-12**

Alinta PVS Poly / Viscose with STRETCH
The addition of Spandex to Alinta PVS suiting's enhances comfort and flexibility, allowing for better movement and fit which is beneficial in tailored garments that are worn for long periods such as school trousers, shorts and skirts.

Green Point Christian College

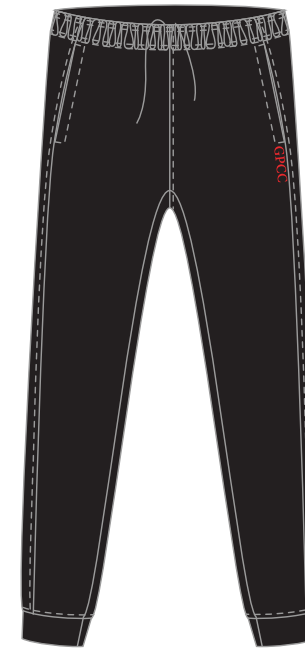
Winter Academic/Sports Uniform Yr K-12:



**Blouse L/S White
7-12**



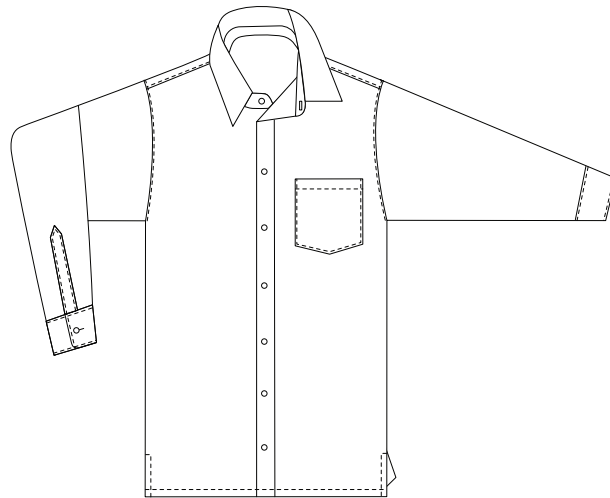
**Academic Jacket
K-9
Sports K-12**



**Performance Fleece
Trackpants
K-12**



**Girls fit
Sport Shorts
Size J12-L22**



Shirt L/S White 7-12

SOFTshell
Alinta SOFTShell is a high-performance outer wear fabric that is wind and water resistant – protecting the wearer from harsh elements while adding that extra layer of warmth. Alinta SOFTShell is engineered with spandex providing stretch and comfort for all day wear.

Performance FLEECE
Alinta Performance Fleece garments are essential for layering. The cosy fleece inner provides optimal warmth while its breathability ensures that you won't overheat. This durable blend of Polyester Cotton makes it perfect for school trackpants, hoodies and Jackets that can be worn daily.

Stretch Micro
Alinta Stretch Micro is a 4 way stretch performance fabric with an Anti-static finish – providing superior comfort. The elastane in this fabric allows it to move with your body. This makes it ideal for activities that require a full range of motion. Alinta Stretch Micro is lightweight and soft to wear next to the skin.

All designs presented here are the exclusive intellectual property of Alinta Apparel. Unauthorised copying, reproduction, or distribution of these designs is strictly prohibited.